



2023 - 2024  
ACADEMIC YEAR

**WOODLAWN  
SCHOOL**



# OUR MISSION

To produce independent,  
lifelong learners  
who are responsible,  
contributing members  
of a diverse global society.



BUILDING FUTURES TOGETHER



# SCHOOL HOURS

**8:30 AM - 2:45 PM**

Early Explorers Pre-K and Junior Kindergarten

**8:15 AM - 3:00 PM**

Kindergarten & 1st Grade

**8:15 AM - 3:15 PM**

2nd - 8th Grade

**8:30 AM - 3:15 PM**

9th - 12th Grade

**Office Hours:** 7:45 AM - 4:00 PM

**Note:**

Carline opens at 7:45 AM for all students Pre-K - 12.



BUILDING FUTURES TOGETHER



# GENERAL INFORMATION

## Woodlawn Carline Locations

We utilize two carlines on our Woodlawn campus.

One is located at Stinson Hall and the other at Woods Hall. You access the Stinson Hall carline by taking the fork to the right after entering Woodlawn's campus. The Woods Hall carline is accessed by taking the fork to the left.

## Morning Drop-Off

Morning drop-off begins at 7:45 AM for all grade levels. There are no adults on campus before that time. To ensure the safety of students, please do not drop children off prior to 7:45 AM.

For grades K - 8, we recommend that students arrive by 8:00 AM so they have plenty of time to prepare and greet friends, and are ready to begin their school day at 8:15 AM. Should you arrive after 8:15 AM (K - 8) or 8:30 AM (Pre-K and grades 9 - 12) your student will need a tardy slip to give to their teacher. *Please park your car and walk your student into Stinson Hall to check-in.*

## Lower School (Grades Pre-K - 5):

Morning drop-off occurs at Stinson Hall

## Middle School (Grades 6-8) and Upper School (Grades 9-12):

Morning drop-off occurs at Woods Hall.

## Afternoon Dismissal

- Pre-K and Junior Kindergarten students - 2:45 PM Dismissal - Stinson Car Line
- Kindergarten - 1st Grade - 3:00 PM Dismissal - Stinson Car Line
- 2nd - 5th Grade - 3:15 PM Dismissal - Stinson Car Line
- 6th - 8th Grade - 3:15 PM Dismissal - Woods Hall Car Line. If there is a younger sibling, you are welcome to use one car line to pick up your children.
- 9th - 12th Grade - 3:15 PM Dismissal - Woods Hall Carline

For our 2nd - 5th grade families, we ask that you not arrive in the Stinson carline until 3:10 PM to avoid getting "stuck" in the car line for our earlier student dismissals. *\*Please note, if you have siblings, you are welcome to use one carline only. Typically the older child will use the Stinson Hall carline along with the younger sibling.*



BUILDING FUTURES TOGETHER



# GENERAL INFORMATION

**Early Dismissals:** Parents wishing to pick up their child early should call or come to the main office where Woodlawn admin will call for the student to be released.

**Absences:** In the event your child is absent, please email [info@woodlawnschool.org](mailto:info@woodlawnschool.org). Woodlawn admin will notify your child's teacher(s). If you know you'll be out ahead of time, please coordinate with your child's teacher(s).



**After Care at Woodlawn:** Our After Care program is offered daily from 3:00 PM to 5:30 PM for students in grades Pre-K - 1 and 3:15 PM to 5:30 PM for students in grades 2nd - 5th. There is a designated quiet time for students to focus on homework. Students also play outside on the playground, or indoors during inclement weather.

**Parents must pre-purchase blocks of time for planning purposes: \$15 per half hour and \$20 per hour.** Please make pre-payments to Woodlawn School for the designated after-care time prior to your student enrolling.

At this time, you can pay by check (make a note on checks "After Care at Woodlawn") or Venmo. Our preferred payment is Venmo (@woodlawnschool).

The program is located in Garden Shed South, and you will pick up your student from there. Students should bring their own snacks and drinks. For questions related to the After Care program, please reach out to [Abigail Kuligin](#).

For billing questions related to blocks of time purchased and used, please contact [Sharon Gostomski](#).



BUILDING FUTURES TOGETHER



# GENERAL INFORMATION

## Tuition and Payments

Payment may be made via one of the following methods:

- Bring a check to the main office of Stinson Hall.
- Mail a check to Woodlawn School, PO Box 549, Davidson, NC 28036.
- Bill Pay through your bank - Please use the above PO Box address if you choose Bill Pay.
- By setting up your SmartTuition account through 'BlazerNet's tuition management system.

\*For tuition-related questions, please email [Sharon Gostomski](mailto:Sharon.Gostomski@woodlawn.org).

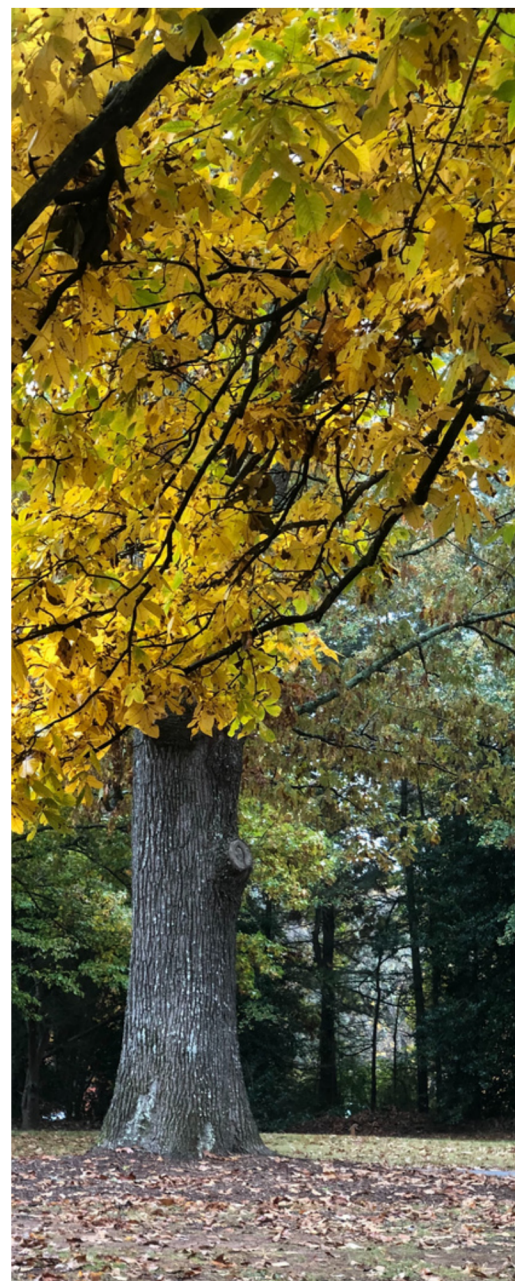
**School Hot Lunch:** We are excited to offer **My Hot Lunchbox** as our hot lunch program! Order lunch from a wide variety of options provided by your student's favorite local restaurants.

**New Families:** To begin ordering lunches, please visit [ordernow.myhotlunchbox.com/login](http://ordernow.myhotlunchbox.com/login) and create an account by following these instructions:

1. Click "Sign Up."
2. Under Customer, click "Create Account."
3. Fill in all the required fields and be sure to add a profile for each child you are ordering for.

**Important note:** Ordering ends at 12:00 noon the day **before** each lunch delivery.

If you have questions, please contact My Hot Lunchbox at (888) 894-8295 or email: [info@myhotlunchbox.com](mailto:info@myhotlunchbox.com).



BUILDING FUTURES TOGETHER



# GENERAL INFORMATION



## After School Clubs

**Grades K - 6th** - We have several exciting After School Club opportunities for students after school. These enrichment activities vary each trimester. Examples of some of our offerings are Science Club: Castle, Catapults, and Coat of Arms; Dance Intensive Class; Group Guitar; Chess Club; Soccer Vision Academy. For more information regarding After School Club opportunities, please contact [Kari McCormick](#).

**Middle and Upper School** - Sixth through twelfth grade are welcome to participate in various student-directed clubs and activities after school. Past clubs have included the following: Coding Club, Frisbee Golf, Model UN, Science Olympiad, Photography, and Student Newspaper. If your child is interested in starting a club at Woodlawn, please email [Katie Verlin](#) (MS) or [Hahna Hayden](#) (US).

**Trailblazer Athletics:** Woodlawn is a member of the Southern Piedmont Athletic Association and we have 13 Varsity Team offerings for grades 7 - 12. Sports teams include Soccer, Cross Country, Volleyball, Golf, Swimming, Basketball, Track & Field, and Tennis.

Our Middle School sports offerings begin in 5th grade, where students are welcome to participate in 8 different interscholastic sports teams, including soccer, cross country, volleyball, basketball, golf, tennis, and flag football.

For more information regarding Trailblazer Athletics, please contact [Coach Priest](#).

**Parent Involvement:** There are multiple ways for you to be involved and we look forward to getting you connected with other Woodlawn parents. Our parent organization is called the 'Blazer PAC Team. To learn about ways to volunteer or for any specific questions, please contact [Kari McCormick](#).



BUILDING FUTURES TOGETHER

# GENERAL INFORMATION



## Woodlawn Whole School Communication

### Woodlawn Notes - Upcoming Events + News

Our weekly e-newsletter keeps our community informed on the latest news and events at Woodlawn. This is one of the best ways to stay connected to the many Pre-K - 12th grade events happening on campus and in our local community. Woodlawn Notes is delivered every Thursday during the school year.

### 'Blazer Blast - News You Need to Know Now

E-mail communication is delivered when there are special announcements to make. These e-blasts typically are delivered on Tuesdays but can vary from time to time.

### Today's the Day - A Campus Event Reminder

E-mail communication to remind our community of an event for the Woodlawn community that occurs on the day the email is delivered.

### Looking Forward with Holly Honeycutt, Head of School

A monthly email communication from our Head of School, Holly Honeycutt sharing what our community can look forward to in the weeks and months ahead. Looking Forward is delivered the first Tuesday of each school month.

'BlazerNet is where you can view your student's report cards throughout the year and access the student and parent directories. Please contact our Finance Office at [finance@woodlawnschool.org](mailto:finance@woodlawnschool.org) with any questions regarding your account, tuition, and/or other bills that come up throughout the school year.

**REMIND** - This is our text messaging service that we use to send out any emergency or last-minute news. Please make sure we have your correct cell phone numbers in REMIND. If new to Woodlawn, please follow the REMIND instructions included in this packet or via the Families page on our website.



BUILDING FUTURES TOGETHER



# GENERAL INFORMATION

## 'BLAZER PHILANTHROPY GUIDESHEET



Woodlawn's Development Office oversees fundraising, events, PAC Team (parent/community volunteers), alumni relations. and our most valuable investment - our students.

As we prepare the next generation of problem solvers for our complex world, we rely on investments beyond tuition, including time, talents, and treasure.

### The 'Blazer Fund

The 'Blazer Fund, our most important annual fundraiser, provides the additional needed resources that are essential to keeping Woodlawn School excellent and innovative.

These unrestricted gifts help sustain and support our classrooms, extracurriculars, athletics, and faculty and staff. Each fall, money is raised as a focused campaign involving everyone connected to Woodlawn. Contributions have a significant qualitative effect on the school by supporting our operating budget. Gifts to the 'Blazer Fund are used in the current school year and provide a direct investment across our campus. Visit our website's "Get Involved - 'Blazer Fund" section for more information.

### 'Blazer PAC Team (Parents and Community) The Key to Building Futures

Our extraordinary parents who volunteer to support events and programs throughout the school year are the backbone of Woodlawn School and what makes us successful.

Our PAC team fosters school spirit, creates connections, and provides volunteer opportunities throughout the school year. All parents are members of the PAC and are encouraged to volunteer. From helping organize community events to campus beautification, the options are endless. For more information, please visit our PAC Team page on the website under "Get Involved."

Contact Kari McCormick, [kmccormick@woodlawnschool.org](mailto:kmccormick@woodlawnschool.org), for any Development related questions.



WOODLAWN SCHOOL  
"OUR ROOTS RUN DEEP"



BUILDING FUTURES TOGETHER

# LEADERSHIP



**HOLLY HONEYCUTT, HEAD OF SCHOOL**

[hhoneycutt@woodlawnschool.org](mailto:hhoneycutt@woodlawnschool.org)

Contact Holly for questions regarding school operations, policies and procedures, or to discuss the strategic vision of the school.



**SHARON GOSTOMSKI, DIRECTOR OF FINANCE**

[sgostomski@woodlawnschool.org](mailto:sgostomski@woodlawnschool.org)

Contact Sharon for questions regarding tuition payments, invoices, aftercare payments, and account balances.



**JENNIFER MOORE, DIRECTOR OF ENROLLMENT MANAGEMENT**

[jmoore@woodlawnschool.org](mailto:jmoore@woodlawnschool.org)

Contact Jennifer for questions related to Woodlawn admissions, enrollment, or transcript requests.



**MARISSA GUERRA, ADMINISTRATIVE ASSISTANT, FRONT OFFICE RECEPTION**

[mguerra@woodlawnschool.org](mailto:mguerra@woodlawnschool.org)

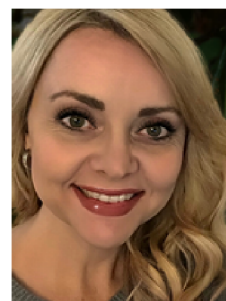
Contact Marissa for questions regarding general school activities, school arrivals and dismissals,



**KARI MCCORMICK, DIRECTOR OF DEVELOPMENT & COMMUNITY ENGAGEMENT**

[kmccormick@woodlawnschool.org](mailto:kmccormick@woodlawnschool.org)

Contact Kari for questions regarding fundraising, community events, 'Blazer PAC Team, volunteering Alumni relations, extended day clubs and summer camps.



**SEANA PEELE, DIRECTOR OF COMMUNICATIONS**

[speelee@woodlawnschool.org](mailto:speelee@woodlawnschool.org)

Contact Seana for questions regarding school communications, Woodlawn website, events, student spotlights, yearbook, GOA, and community news.



BUILDING FUTURES TOGETHER



# LEADERSHIP



**KATIE VERLIN, PRE-K-8 DIRECTOR**

[kverlin@woodlawnschool.org](mailto:kverlin@woodlawnschool.org)

Contact Katie for questions related to Pre-K - 8th grade academics, student life, clubs, and programs.



**SHANNON HOCKSWENDER, PRE-K-8 PBL DESIGNER & ACADEMIC SUPPORT**

[shockswender@woodlawnschool.org](mailto:shockswender@woodlawnschool.org)

Contact Shannon for questions regarding school operations, policies and procedures, or to discuss the strategic vision of the school.



**DR. ERIN GALE, PH.D., UPPER SCHOOL ACADEMIC DEAN**

[egale@woodlawnschool.org](mailto:egale@woodlawnschool.org)

Contact Dr. Gale for questions related to Upper School operations, curriculum, and programs.



**HAHNA HAYDEN, UPPER SCHOOL DEAN OF STUDENTS**

[hhayden@woodlawnschool.org](mailto:hhayden@woodlawnschool.org)

Contact Profe Hayden for questions related to Upper School student life, clubs, and activities.



**KATIE BREWER, DIRECTOR OF COLLEGE COUNSELING & SPECIAL ADVISOR**

[kbrewer@woodlawnschool.org](mailto:kbrewer@woodlawnschool.org)

Contact Katie for questions about the college application process, standardized or AP testing, or non-transfer transcript requests.



**DAN PRIEST, ATHLETICS DIRECTOR**

[dpriest@woodlawnschool.org](mailto:dpriest@woodlawnschool.org)

Contact Coach Priest for questions related to our Trailblazer athletic programs, schedules, or how to volunteer and help support our athletic department.



BUILDING FUTURES TOGETHER

# LEADERSHIP



MEGHAN RAY, K-12 SCHOOL COUNSELOR

[mray@woodlawnschool.org](mailto:mray@woodlawnschool.org)

Contact Meghan for questions related to student counseling concerns.



ANN MARIE REINER, SCHOOL NURSE

[areiner@woodlawnschool.org](mailto:areiner@woodlawnschool.org)

Contact Ann Marie for questions regarding health/medical forms, any health related concerns, or medications for your child.



STACY CHAPMAN, BUILDINGS & GROUNDS MANAGER

[schapman@woodlawnschool.org](mailto:schapman@woodlawnschool.org)

Contact Stacy for questions related to campus maintenance.



## LET'S CONNECT

INSTAGRAM: @Woodlawn\_School

INSTAGRAM: @WoodlawnSchoolAthletics

FACEBOOK: @WoodlawnSchool

YOUTUBE: @WoodlawnSchool

TWITTER: @WoodlawnSchool

LINKEDIN: @WoodlawnSchool

## VENMO

Need to pay for aftercare, Woodlawn merchandise or a school yearbook but don't have cash or your credit card on you? Scan the QR code to jump into Venmo or find us on the app @WoodlawnSchool.



BUILDING FUTURES TOGETHER





704-895-8653

[info@woodlawnschool.org](mailto:info@woodlawnschool.org)

[woodlawnschool.org](http://woodlawnschool.org)

Woodlawn School

135 Woodlawn School Loop

Mooresville, NC 28115

